

### Highlights:

---

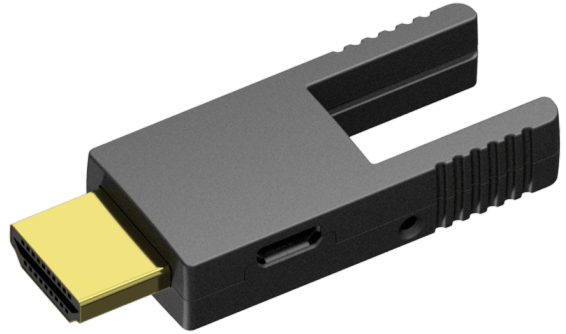
- Fiber optic technology
- Exchangeable connectors

### Product information:

---

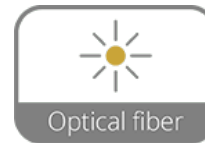
The COP110 is an HDMI Micro D female to HDMI A male straight adapter replacement part\* for use with the CLV215A, CLV220A & CLV315A only. This adapter can transform the connection of the HDMI Micro D cable to an HDMI A male connection for projectors, laptops, desktops or TV's where HDMI A ports are available.

\*2 pieces COP110 come included with the CLV220A.



### Properties:

---



### Product Features:

---

Application	null
Series	null