

## Highlights:

---

- User friendly horizontal & vertical mounting
- null

## Product information:

---

The RIVEA table and wall mount bracket offers a secure and elegant mounting solution for the RIVEA-L 10" touchscreen. Its slim design preserves the floating appearance and refined aesthetics of the panel, ensuring seamless integration in professional AV environments. Designed for stable installation, clean cable management, and long-term durability, the bracket enables both tabletop and wall-mounted setups in commercial and corporate applications.

## Applications:

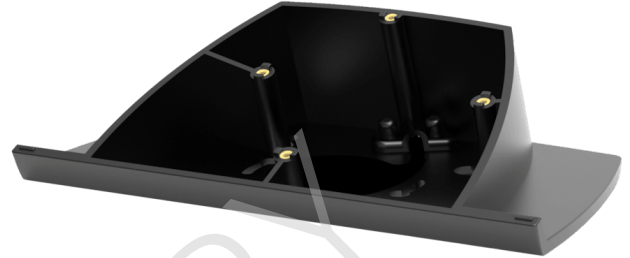
---

- null
- Education
- Hotels
- null
- Residential

## Variants:

---

- RIVEA-AMK10/B - Black version



PRELIMINARY